



PBA

PULSE BREEDING AUSTRALIA

Better pulse varieties faster

The information in this document is current as at January 2020.
For updated information after this date, please refer to NVT results

Supplementary information for PBA Drummond outside of Central Queensland– to be read with the PBA Drummond variety brochure

KEY AGRONOMIC FEATURES OF PBA DRUMMOND

- Rated as susceptible (S) to Ascochyta blight in the northern GRDC cropping region*
- Rated as susceptible (S) to Phytophthora root rot*

*Provisional disease rating. Pulse disease ratings will be available on NVT Online, <https://app.nvtonline.com.au>

- Mid-flowering and mid maturity
- Tall erect plant type

LIMITED YIELD DATA OUTSIDE OF CENTRAL QUEENSLAND

- Limited yield evaluation in south-west QLD (3 sites) and north-west NSW (4 sites) from 2018 NVT.
- For yield data relevant to your region, please visit NVT Online, <https://app.nvtonline.com.au>

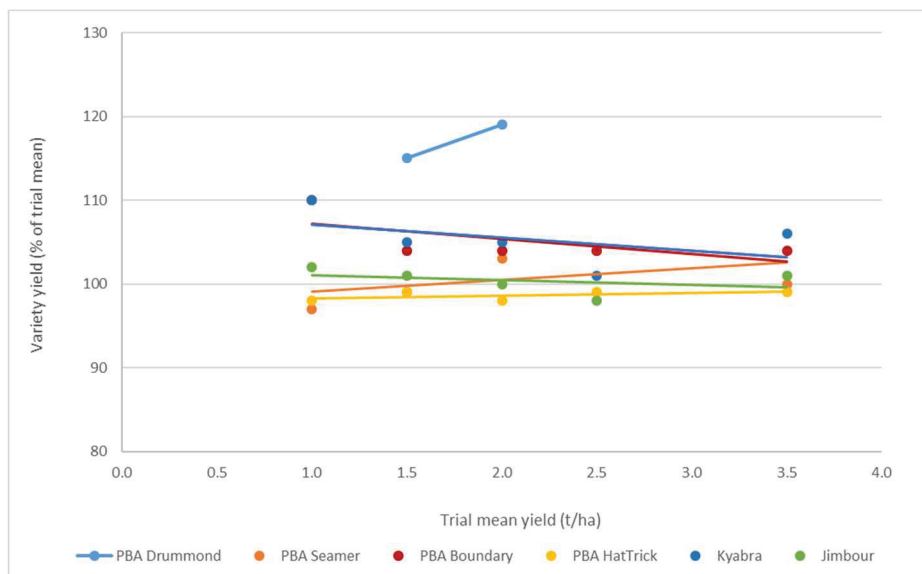


Figure 1. Average relative yield of PBA Drummond (3 sites in 2018 only) and other desi varieties (15 sites, 2014–18), compared to the average trial yield, in south west QLD Stage 3 and NVT trials across a range of yield groups. Source: <https://app.nvtonline.com.au/>

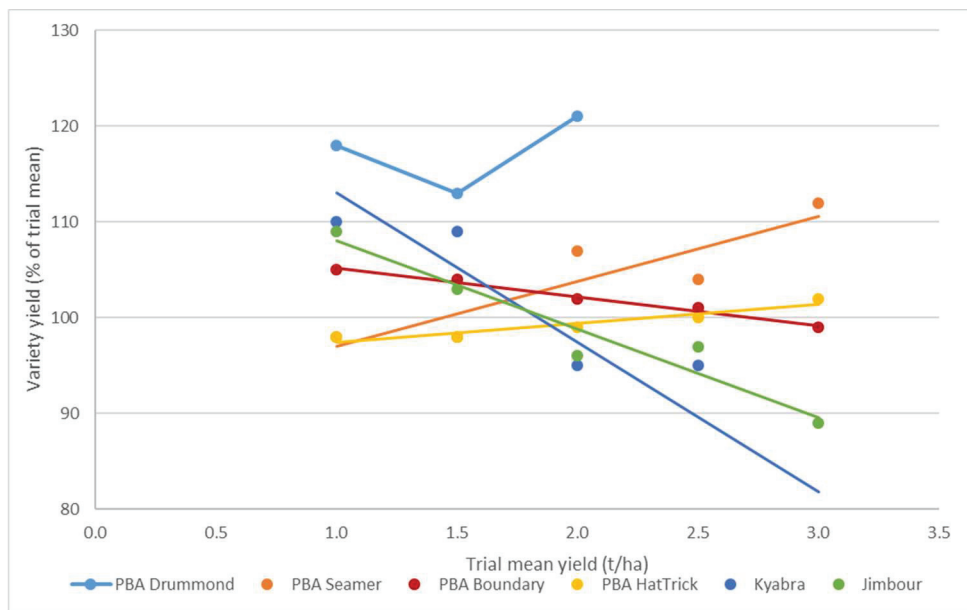


Figure 2. Average relative yield of PBA Drummond (4 sites in 2018 only) and other desi varieties (30 sites, 2014–18), compared to the average trial yield, in north west NSW Stage 3 and NVT trials across a range of yield groups. Source: <https://app.nvtonline.com.au/>

DISEASE MANAGEMENT

Follow the latest disease management advice; <https://grdc.com.au/resources-and-publications/grdc-update-papers>

- Ascochyta blight – PBA Drummond is more susceptible to AB than PBA HatTrick and PBA Boundary. In southern QLD and northern NSW, PBA Drummond should be managed similarly to Kyabra.
- Phytophthora root rot – PBA Drummond is very susceptible to PRR, similar to PBA Boundary which had 74-94 % yield losses over the 4 seasons from 2014-2017. PBA Drummond should not be grown in paddocks with a history of PRR, lucerne, medics or other known hosts such as sulla.

GRAIN QUALITY

- Due to the limited evaluation in southern QLD and northern NSW, only a small subset of grain samples have been assessed. To date no grain quality issues have been observed with PBA Drummond in these regions.

SEED ENQUIRIES

Jon Thelander
Ph: 0429 314 909
jon.thelander@seednet.com.au

AGRONOMIC ENQUIRIES

Northern NSW - Kristy Hobson, 0400 955 476, kristy.hobson@dpi.nsw.gov.au,
Kevin Moore, 0488 251 866, kevin.moore@dpi.nsw.gov.au
Queensland - Merrill Ryan, 0427 603 038, merrill.ryan@daf.qld.gov.au

Disclaimer: Recommendations have been made from information available to date and considered reliable, and will be updated as further information comes to hand. Readers who act on this information do so at their own risk. No liability or responsibility is accepted for any actions or outcomes arising from use of the material contained in this publication. Reproduction of this brochure in any edited form must be approved by Pulse Breeding Australia © 2019